

Planning A Move?

Upsizing or Downsizing?

Are you moving into your dream home? Or downsizing into a sweet little apartment? Perhaps you just moved and can't figure out how to place your furniture? What would the benefits be in arranging your home and furniture in the best energetic balance right from the start?

Using the principles of Feng Shui, I can help you create a beautiful home by using the space efficiently, while also creating powerful flow even in small spaces!

After some shopping and arranging we created a home office in a rather small 600-square-foot-one-bedroom apartment. Rather than push the desk against the wall and block opportunities for this home based business, we placed the desk facing into the room and toward the front door for the best energetic alignment.



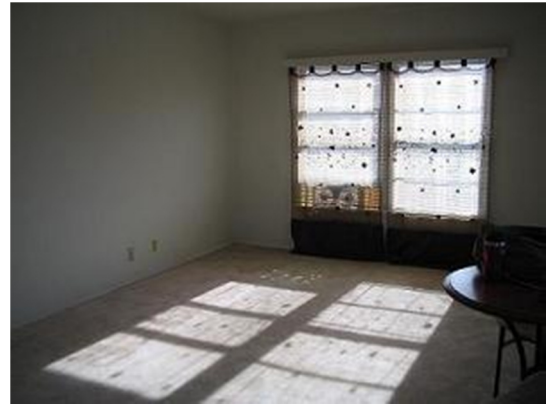
It's best to be able to separate your living space from your work space, but if you are in a small apartment like this, and you must have your desk in the living room, you want to create an energetic barrier so you don't always feel like you're working.

The plant in front of the desk acts like a guardian, separating the living room from the office, so that my client may also relax when she is home. It also acts as protective energy from the poison arrow created by the edge of the desk. The spider plant on top of the bookshelf, softens the poison arrow from its sharp edge as well.

The couch and TV are on the other walls not seen in this picture and area rugs help to define the space.

See another small apartment on the next page!

This is another small 600 sq ft apartment above a garage that we set up on moving day! My client worked from home so we made the kitchen nook into her office space and moved a small bistro table into the living room area for meals. She worked more than she cooked so this arrangement worked well for her.



A new apartment set up with feng shui. The couch faces the front door and falls into the Creativity and Children area of the home. This area is ruled by the element Metal and the color White. The large yellow painting is filled with flowers (earth, which creates metal) and children (reflections of our self), boosting this area of her home. Her favorite meditation chair is in the Helpful People (help from heaven) corner of the home.