



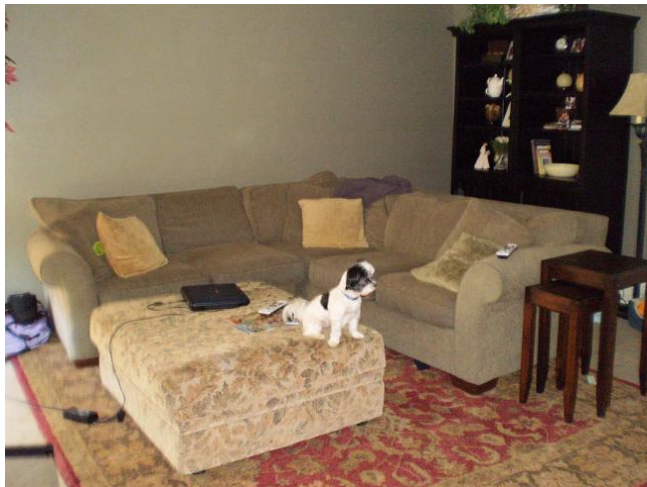
A blocked living room by a huge couch!

If you were to walk in the front door of my client Heather's house, you would hit the back of the couch. This placement blocks all that yummy new chi coming in the door from actually entering into the house. It creates a fast moving channel of energy called sha chi, or cutting energy. Energy likes to meander, so in Feng Shui we try to open up a room and avoid creating energy tunnels!

Her living room falls in the Helpful People and Career corners of her home - we don't want to block our career from flowing and we certainly don't want to block receiving support from friends, family, coworkers and our angels.

Given she has this HUMONGOUS couch with a right side return, we were limited in how we could place the furniture so that it served its purpose but was also supporting the family energetically.

Open arrangement facing the door, new energy coming into the whole house!



We discovered this new configuration that serves us in both goals. We opened the entrance way for good chi to come into the home, when sitting on the couches, you face the front door so you can see what's coming, and the living room still works for conversation and television watching. The shelves are easily accessed... there is plenty of room although it looks tight in this picture. And Patches seems to love the new arrangement. He truly is one of the cutest dogs on the planet

Continued on next page...!

Heather has yet to hang her artwork, and she intends to get a much smaller flat screen TV in the very near future when she sells her roll-top desk that she never uses. That's what I call re-purposing what you have for something you really want. The TV will sit on a table where the big TV currently lives. Next to the TV we have intentions of hanging a fountain to stimulate the water energy and flow of the Career corner.

